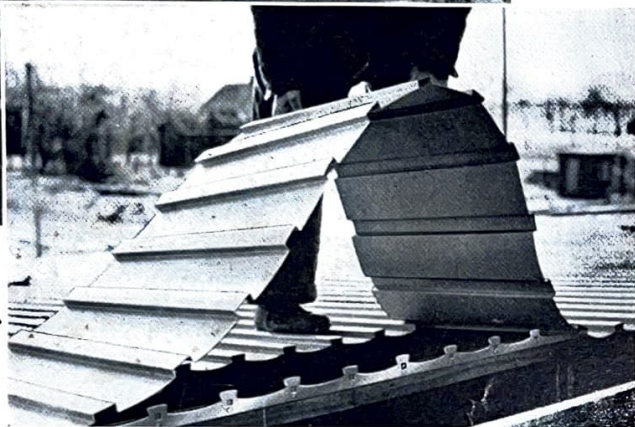


AUSTRALUCO

SELECTED IN CUSTOM DESIGNED LOW PITCHED ROOFS

THE MOST POPULAR TYPES
OF PAN ROOFING SYSTEMS
IN AUSTRALIA ARE
ILLUSTRATED ON THESE
PAGES

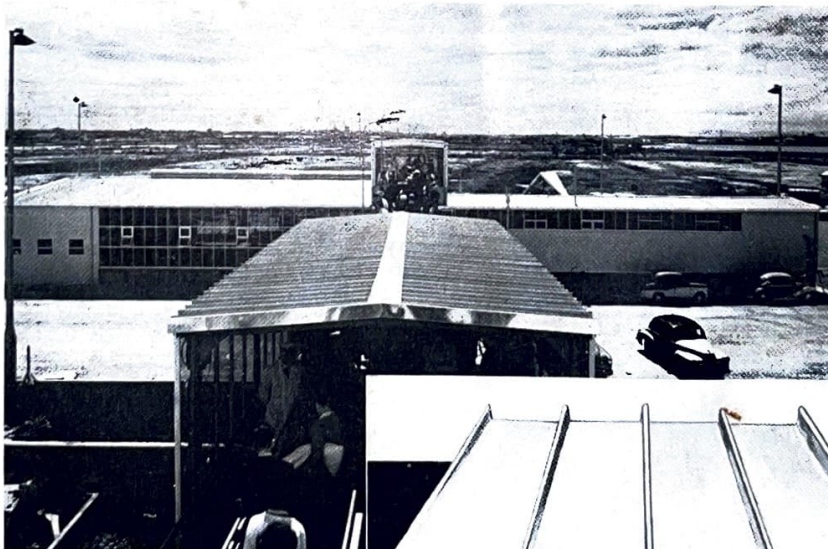


▲ FURAL

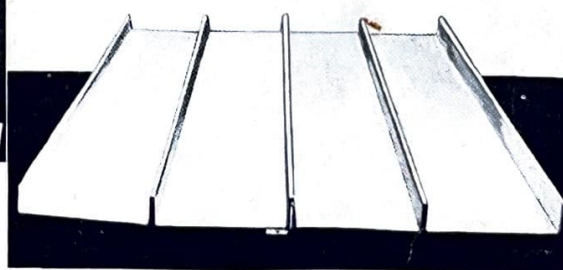
Fural sheeting is supplied as ribbed coil which is unrolled over strip cleats attached to the purlins by clouts acting in shear. This coiled sheeting is produced in long lengths which eliminate side laps and the end laps being of a closely fitting spigot type permit roof slopes down to four degrees. The locking action of this profile is based on the principle of arch and abutment which provides an increasing resistance to upward loading as wind suction forces increase. Downward loads on the curved sheet troughing are borne by the shaped portion of the holding strip between the cleats. The effective width of Fural sheeting is 24" and the dovetail ribs are spaced at 5½" centres. Fural is normally supplied with a shot blasted finish and can be chemically treated by the M.B.V. Process to a pleasant grey colour. For further details contact Umec Pty. Ltd., Head Office 185 Elizabeth Street, Sydney, or at agencies in each State.

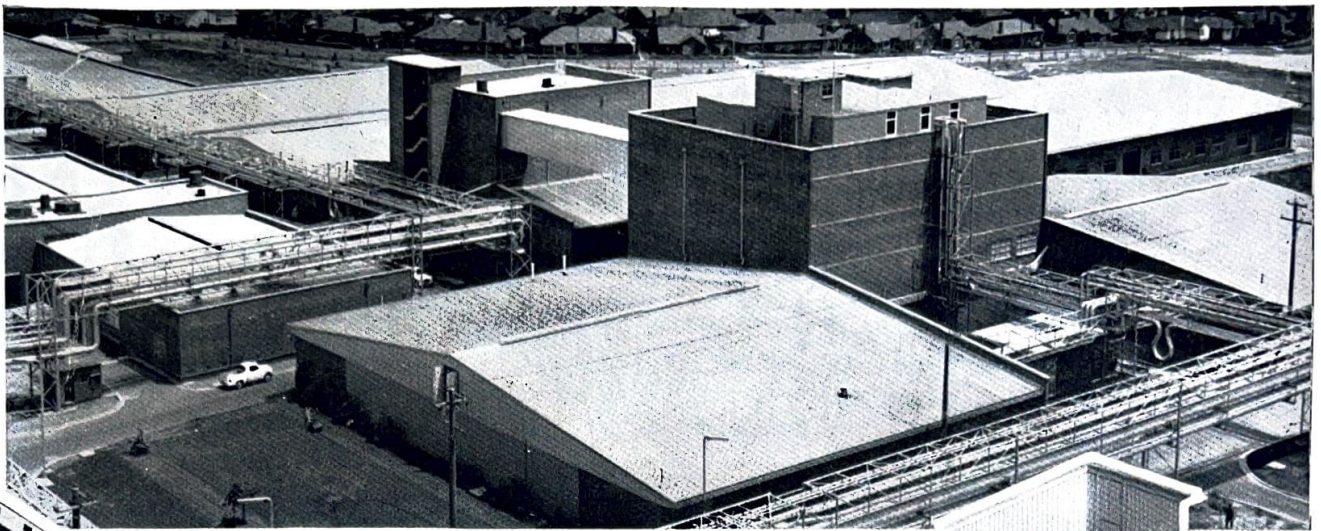
Monodek is a three rib profile with ribs spaced at 7½" centres to yield an effective width of 15". The ribs are 1½" deep and are locked together at the overlapping rib by button punching. Monodek sheets are fixed to the supporting structure by clips clouted to the top face of the supporting structure.

Monodek is normally supplied with a mill finish only and further finish can be obtained from Nu-Roof (Vic.) Pty. Ltd., 460 Victoria Street, Melbourne, C.I.

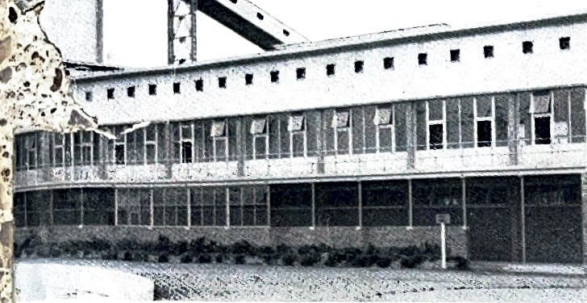


MONODEK ►





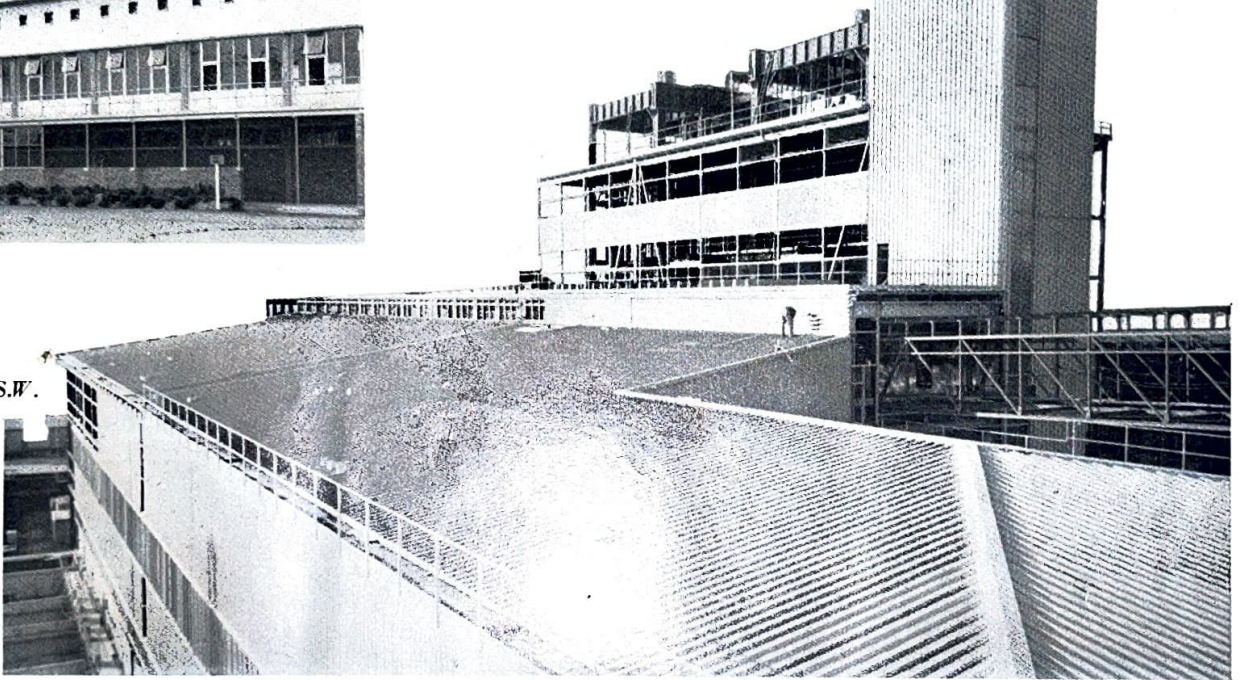
▲ KODAK (A/ASIA) PTY. LTD.
 Erector—J. L. WILLIAMS PTY. LTD.
 Profile—INDUSTRIAL TROUGH-LT 7



R STATION
 ED

UNIVERSITY OF N.S.W.
 LTD.

R STATION ▶
 R PTY. LTD.
 e—SNAPRIB



MANUFAC.
 AVILLE
 T STRUCTURES
 TROUGH-LT 7

ACECOURSE ▶
 STRUCTURES
 PTY. LTD.
 ROUGH-LT 5

